

iStatus®

Distributed, Multi-Site Network Monitoring

IT Doesn't Have To Be Complicated

Monitoring the connectivity of your business is easier than ever. No more complicated dashboards, constant alerts, or weeding through complex data to figure out the problem. iStatus allows you to view your connections, monitor usage, and verify backup connections are ready, all in one unified platform. Built with simplicity in mind, iStatus is user-friendly, non-technical, and has key features such as the widget — which allow you to view your information without even logging into the dashboard. With constant connection monitoring at your fingertips, iStatus takes the guesswork out of IT management by drastically improving distributed, multi-site network monitoring.

Engineered to be a cost-effective, multi-site network monitoring tool, iStatus unites IT professionals and business staff, with simple network alerts. When paired with a RocketFailover® backup Internet connection, iStatus uses ConnectionValidation™ to ensure the backup connection is always ready. IntelligentAlerts™ are delivered via intelligent push notifications or emails to allow network monitoring to become proactive and effortless.

Simple Network Monitoring For Every Connection

Ideal for complex, multi-location networks, iStatus dashboard gives you a birds-eye view of all remote location Internet connections. The dashboard allows you to view primary and backup Internet connections so that you can maintain business continuity. In the event of a connection failure, iStatus sends detailed alerts with everything you need to respond immediately — no more guessing. By utilizing cost-efficient, secure hardware probes, simply plug in the device, configure a few settings, and start monitoring your network in minutes.

Primary Features:

- Monitor Internet connections & carrier bandwidths with a purpose-built hardware appliance.
- Real-time metrics to proactively monitor of events for each location via timelines.
- ConnectionValidation ensures the backup connection is always ready.
- Dramatically reduces recovery time from downtime.
- IntelligentAlerts keep you informed & proactive.
- Enterprise-ready features to manage complex networks with ease.
- Low cost & Live-In-Five™ easy install.



iStatus On Your Homescreen

With a simple left swipe to view widgets, iStatus provides a 5-second overview of your network connectivity without the hassle of logging into another dashboard. Quickly navigate to our most-used features with iStatus Home Screen Menu via Apple iOS 3D Touch feature.

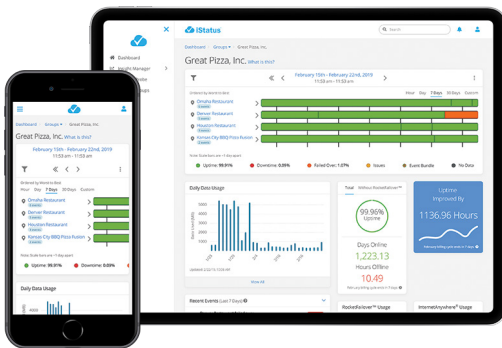


Dashboard

Quickly and effortlessly check the Internet connectivity status at each of your locations with information organized on one dashboard. Simple online, offline, RocketFailover, and issue icons indicate the status of locations and the data usage bar allows you to manage data between multiple locations for your current month.

Insight Manager

Proactively manage your network connectivity with intelligent analytics, real-time data updates, and easy to understand network insight. With real-time timestamps, you can view when your data was last updated. Coupled with simple, human-readable alerts, you can easily monitor an individual location, data usage, uptime, and failover events. Also, generate additional reports that allow IT teams or management to better understand network priorities.



ConnectionValidation™

ConnectionValidation is a patent-pending iStatus technology that allows continuous testing and validating of backup connections to ensure our AlwaysOn 4G™ can meet your business needs. With peace of mind verification, ConnectionValidation ensures that in the event of an ISP Internet outage, your business operations remain seamless.

IntelligentAlerts™

By reducing thousands of notifications to just a handful of IntelligentAlerts™, iStatus makes multi-location network management easier, delivers critical information to key stakeholders, and helps solve connectivity issues quicker. IntelligentAlerts for bulk push notifications and email reduces information overload. With the Business Hours feature, you set notifications for a specific window of time and it bundles IntelligentAlerts from overnight data into one email that's sent to you before your next business day.

