



Thinix Touch v6 Overview ←

Thinix Touch v6 enables the ability to leverage the power of a Windows based computer, with the power of a highly touch-optimized user interface. With the focus of many large computer manufacturers being directed towards the sale of touchscreen computers, Thinix Touch was designed and developed to improve upon the standard Windows interface by creating an entirely new interface that is fundamentally finger-friendly. Thinix Touch makes it easy to provide a custom computer appliance that can run third-party programs, on top of the core applications. Users can browse the Internet, e-mail, chat, create and edit Office documents, and more.

Detailed Thinix Touch Installation Steps ←

1. Verify Computer Meets System Requirements

- a. Computer must have .NET Framework 2.0 with Service Pack 2
- b. To determine which versions of the .NET Framework are installed, locate the **%systemroot%\Microsoft.NET\Framework** folder.
 - i. To open this folder, you can paste this address into a Windows Explorer address bar.
- c. To verify which versions are installed on a Windows computer, follow these steps:
 - i. Open the **v2** folder provided in the root folder (if applicable).
 - ii. Right-click the **Mscorlib.dll** file, and then click Properties.
 - iii. Click the Version tab, and then note the file version.
 - Correct version should read similar to **2.0.50727.3053**
- d. Microsoft XP computers can access the information in the 'Add/Remove Programs' section of the control panel.
- e. To guarantee the most current version, download and run all Windows updates for .NET 2 SP2 at <http://www.microsoft.com/downloads/details.aspx?familyid=5b2c0358-915b-4eb5-9b1d-10e506da9d0f&displaylang=en>.

2. Download Thinix Touch from the Thinix website

- a. Select the software download link for the appropriate operating system (32bit or 64bit) of your computer.
- b. When the File Download screen appears, click 'Save'.
 - i. Save the Installer Package to the Desktop for quick access.
- c. Click 'Run' twice to activate the installation screen.

3. Follow the Onscreen Installation Steps

- a. When the Setup Wizard appears, click 'Next' to continue.
- b. On the 'License Agreement' section, check the box next to 'I Agree' then hit 'Next' to continue.
- c. Select the desired installation folder.
 - i. To install in the default folder, click 'Next'.
- d. Check the provided box to install Thinix Touch shortcuts to the desktop.
 - i. Click 'Next' to continue.
- e. Click 'Next' to start the installation.
 - i. Installation may take several minutes, depending on the speed of your computer.
- f. Hit 'Close' to exit the screen and complete the installation.

4. Icons for Thinix Touch and the configuration utility have been automatically set to your desktop (if you selected the option during the installation process).

- a. Select the Thinix Touch icon to launch the user interface in its default settings.

5. Choose to Purchase, Activate, or Evaluate Thinix Touch v6.

- a. Click 'Buy' to Purchase Thinix Touch, and open the Thinix online store.
 - i. Select the license option you would like to purchase, and follow the onscreen steps.
 - If you have not already done so, you will be prompted to log-in or create a user account.
 - ii. Once your order is complete, you will receive an email that provides you with your Thinix Touch license credentials.
- b. Activate your Thinix Touch v6 license.
 - i. Type in the License ID and Password provided in the email you should have received after purchasing the license.
 - ii. Register Thinix Touch by entering your contact information.
 - iii. Click 'OK' to launch Thinix Touch.
- c. Evaluate Thinix Touch v6
 - i. You are given a 30-Day Trial of Thinix Touch, effective the day of download.

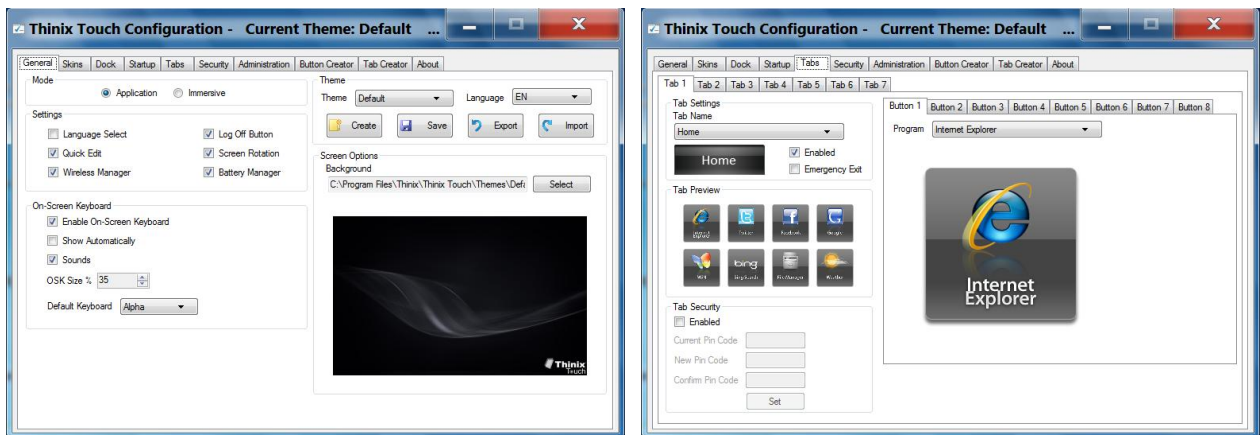
6. Enable the Touch-Friendly Features.

- a. Open the Thinix Touch root folder (C:\Program Files\Thinix\Thinix Touch).
- b. Run 'Silenttouchvisuals.exe' by double clicking the icon.
 - i. This will enlarge the items on the screen (icons, buttons, menu bars, etc.) and enable single-click functionality to make the application more touch-friendly.
- c. A manual log off/log on is required to enable the features.

Configuring Thinix Touch: ←

The look and feel of Thinix Touch can be fully customized by changing the background image, theme skin, icons, and more. The entire configuration can be saved in a custom 'Theme', and a theme selector allows users to select from pre-defined themes for the user interface.

- To change the Thinix Touch settings, return to the Windows desktop and open the Thinix Touch Configuration utility located. This allows you to fully configure all settings and security features of the user interface, as well as the applications on each tabbed page.



- After configurations and changes have been made, return to the 'General' tab and click Save; close the utility and launch Thinix Touch. All of your updates should now be visible in the user interface.
- For more information on the Thinix Touch Configuration utility, and how to modify the user interface, reference the [Thinix Touch v6 User Manual](#).